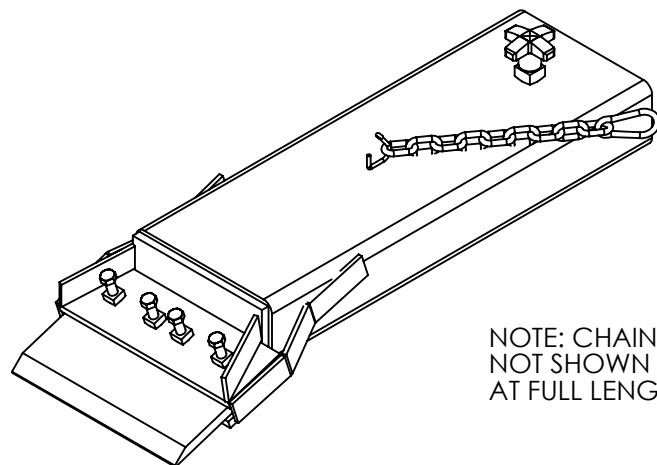
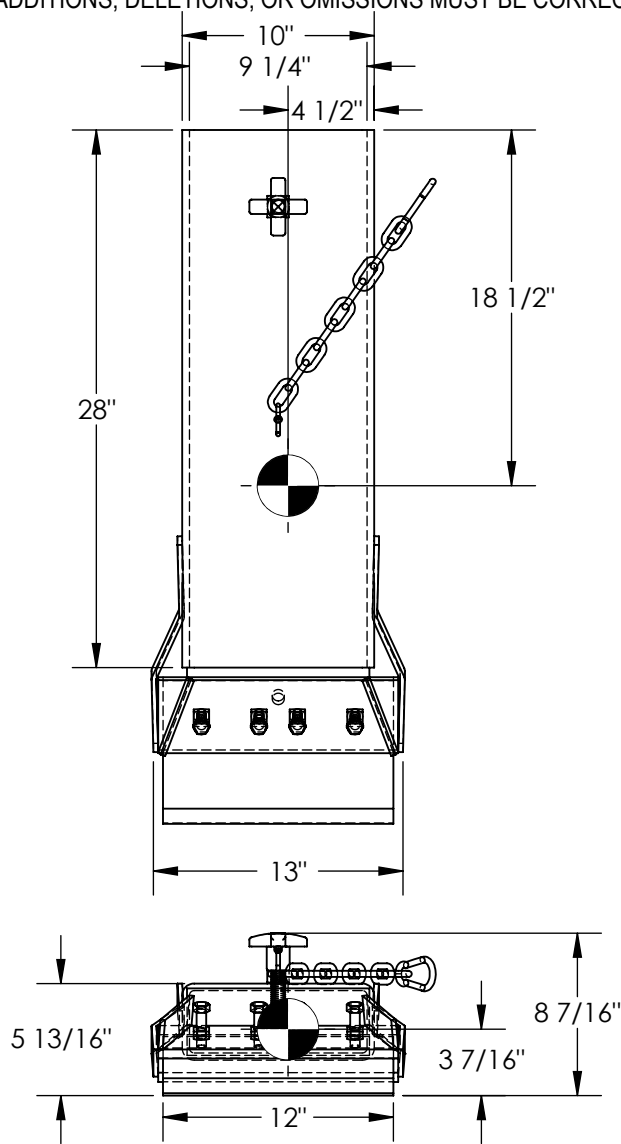


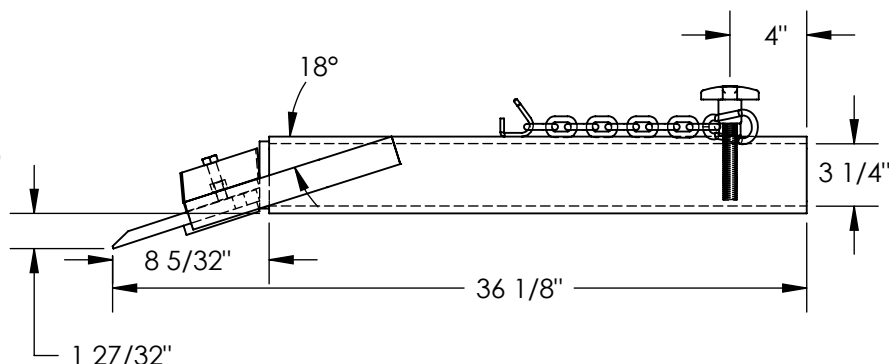
FORK TRUCK FLOOR SCRAPER - SCRAPE-1

APPROX WEIGHT: 121.66 lbs.
 DOES NOT INCLUDE WEIGHT OF POWER OR PACKAGING!!!

ANY ADDITIONS, DELETIONS, OR OMISSIONS MUST BE CORRECTED ON THIS DRAWING AS THIS DRAWING WILL BE CONSIDERED ALL INCLUSIVE



NOTE: CHAIN NOT SHOWN AT FULL LENGTH



ALL GRAPHICS PROVIDED ARE FOR REFERENCE ONLY. IF CERTAIN DIMENSIONS ARE CRITICAL PLEASE VERIFY THOSE DIMENSIONS WITH YOUR SALESPERSON

DIMENSION TOLERANCE $\pm 1/4"$

STANDARD FEATURES

- MODEL NUMBER IS: SCRAPE-1
- OVERALL WIDTH IS: 13"
- OVERALL LENGTH IS: 36 1/8"
- OVERALL HEIGHT IS: 8 7/16"
- 56" SAFETY CHAIN ($\phi 5/16"$) WITH QUICK CLASP
- USABLE FORK POCKET SIZE IS: 3 1/4" x 9 1/4"
- BLADE IS: TOUGH BAKED IN POWDER COATED YELLOW FINISH
- FRAME IS: TOUGH BAKED IN POWDER COATED BLUE FINISH.
- LOST LOAD IS: 122 LBS (APPROX)
- EFFECTIVE THICKNESS IS: FORK LENGTH MINUS 28"

SPECIAL FEATURES

NONE

NEVER EXCEED LOAD CENTER RATING PER FORK TRUCK MANUFACTURER'S GUIDELINES. DO NOT USE THIS FORK TRUCK ATTACHMENT IF LOAD WILL EXCEED FORK TRUCK MANUFACTURER'S LOAD CENTER RATING.

APPROVAL

I, THE UNDERSIGNED, AGREE THAT THE PRODUCT AS REPRESENTED SATISFIES DESIGN AND DIMENSION REQUIREMENTS. I ALSO ACKNOWLEDGE MY DUTY TO CONFIRM PRODUCT AND INSTALLATION COMPLIANCE WITH ALL APPLICABLE FEDERAL, STATE AND LOCAL REGULATIONS AND STANDARDS.
UNITS REQUIRING APPROVAL DRAWINGS OR MODIFIED ARE NON-RETURNABLE
 As drawn As marked

Signed: _____ Date: _____

Printed Name: _____

LEAD TIME WILL START UPON RECEIPT OF SIGNED APPROVAL DRAWING

DISTRIBUTOR'S NAME:		P.O.#
VESTIL MANUFACTURING		X
DRAWN BY: BCN		W.O.#
DATE: 10/28/2014		X
REFERENCE: X	SCALE: 1:10	SALES: X
QUOTED LEAD TIME: X	QUOTE # X	FILE NAME:
		47-007-001